



Better Air is Our Business®

AmericanAirFilter® Side Access Polyseal

*Part of a Total Systems Approach
to Improved Indoor Air Quality (IAQ)*

The Side Access Polyseal filter housing is engineered for use with air handling units or other side access equipment. It offers the convenience of servicing the filter from outside the air duct and is especially suited for installations involving limited headroom.

The Polyseal Concept

The Side Access Polyseal housing is a general purpose filter housing which provides mechanical strength, ease of use, and economy. It will accommodate both 2" and 4" prefilters and final filters used in combination or individually.

Dynamic Seal

The Polyseal filter track sealing system utilizes a high density Nylon piled gasket which is automatically positioned against the final filter as it is installed into the mounting track. The integrity of the seal is ensured because it is "air actuated." The air pressure on the upstream side of the filter dynamically forces the filter against the gasket. The air passes through the filter and is cleaned — no dirty air bypass. Vertical sealing between filters is provided by gasket strips applied to the sides of the final filters and to the doors of the housing.

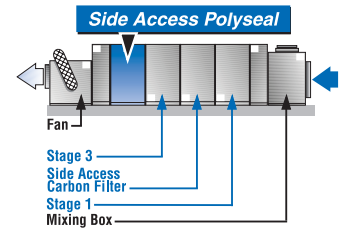
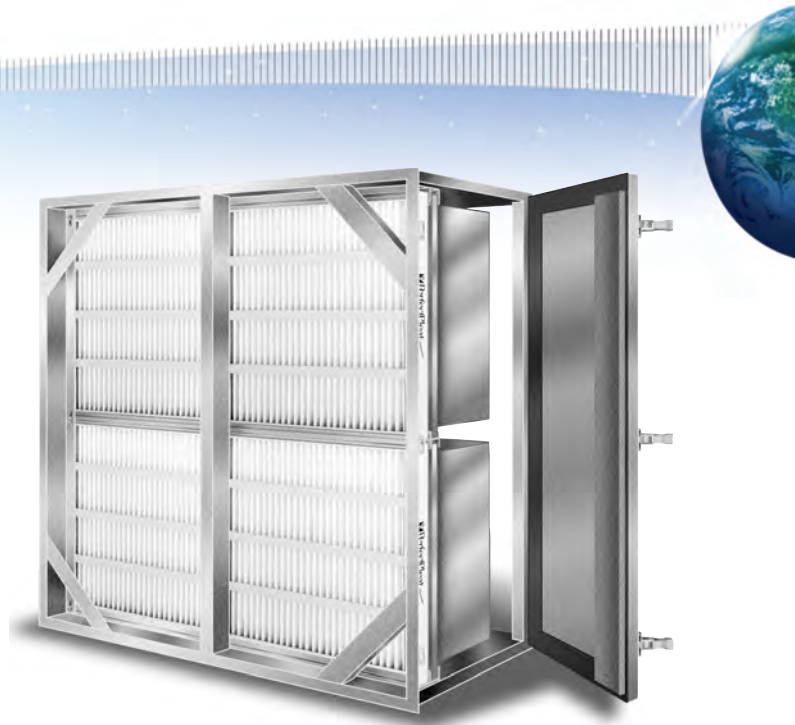


Polyseal housing shown with PerfectPleat® prefilter and VariCel® final filter. The Polyseal System includes an extruded aluminum mounting track and final filter gaskets with space for static taps.

Side Access Filter Housing for IAQ Applications

The Side Access Polyseal housing was specifically designed to meet IAQ air cleaning requirements when used with AAF high-efficiency filters treated with an antimicrobial. Many factors contribute to IAQ problems. But the primary contributors are particulate dust and microbial contamination in the air we breathe.

By upgrading your HVAC system to AAF high-efficiency filters with antimicrobial and Polyseal side access housings to ensure filter sealing integrity, you remove the minute airborne particulate which cause



allergic reactions, discomfort, and health risks. Buildings with a cleaner air supply have reduced maintenance costs and healthier, more productive employees and tenants.

Use the Side Access Polyseal housing alone or enhance your system performance by combining it with other AAF IAQ-engineered filter products.

Get the IAQ Advantage— AAF Filters with Antimicrobial for Side Access Polyseal

AAF filters with antimicrobial are designed specifically to improve IAQ. Air filters are designed to trap and contain particulate air contaminants including viable fungal and bacterial spores. The presence of an antimicrobial preservative in the filter media is intended to preserve the integrity of the media throughout the useful life of the filter. Antimicrobial preservatives are not meant to increase the efficiency of the filter, they are intended to limit the growth of microorganisms captured by the filter.



Side Access Polyseal

Housing Features

Access Doors: Access doors are hinged and have over-center draw type plated latches. The doors seal against the housing using closed cell neoprene gasket. The standard Polyseal is furnished with two doors.

Rugged Construction:

The Side Access Polyseal housing has exceptional structural strength. It utilizes 1⁵/₁₆" wide turned out flanges, welded construction, vertical supports, and angle braces.

The Polyseal housing is designed to operate at up to 6 in. w.g. negative or positive pressure. Optional high pressure construction is available for service up to 10" w.g. negative or positive pressure.

Sizes: The Side Access Polyseal housing is offered in 96 sizes, spanning heights from nominal 1' through 8', and widths from nominal 1' through 12'. Capacities range from 1,000 CFM at 500 FPM to 60,000 CFM at 625 FPM.

Larger sizes are available. The Polyseal housing is designed to expand using standard sizes as building blocks. For example a 16' wide unit can be built using two 8' wide modules or an 8' high unit using two 4' modules. Modules are factory pre-engineered for field installation.

Housing Depths: Five housing depths are offered: 22¹/₄", 34¹/₄", and 42" deep. All housings are

designed to enclose a 2" or 4" prefilter and final filter such as the DriPak, VariCel, VariCel II, or VariCel V. The 22¹/₄" housing will completely enclose the 2" or 4" prefilter and a 12"-deep final filter. The 34¹/₄" housing will completely enclose the 2" prefilter and up to a 30"-long DriPak filter. The 42" housing will completely enclose the 2" or 4" prefilter and up to a 36"-long DriPak filter.

2" or 4" Prefilter: The Polyseal housing is available with a 2" or 4" prefilter track designed to accommodate standard 2" or 4" prefilters. The prefilters slide on raised rounded ribs for easy installation and removal.

Steel Skin Insulation:

All Polyseal housings can be furnished with optional 2" fiberglass insulation. Enclosed in a double metal skin, the insulation is external to the airstream. This optional insulation covers both doors, and top and bottom pans.

Standard

- 3 Depths (22¹/₄", 34¹/₄" and 42")
- Rugged Doors
- Structurally Rated Up to 6" Positive Pressure
- 16-Gauge Galvanized Steel
- Welded Construction

- 1⁵/₁₆" Flanges
- Integral Prefilters, 2" or 4"
- Internal Bracing
- Compact Design
- Factory Assembled
- Easy to Install

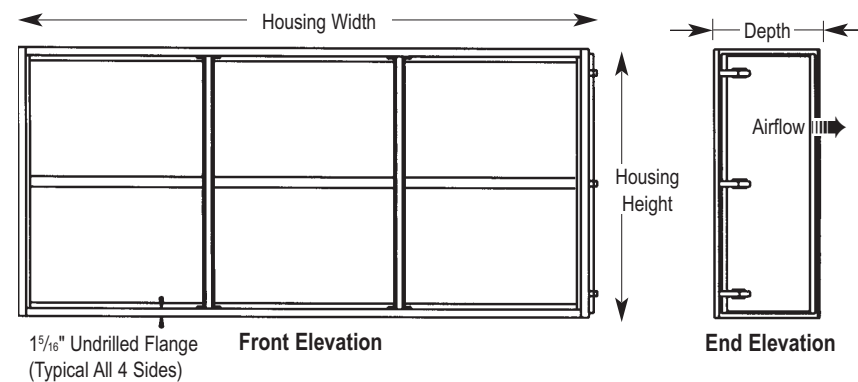
Options

- Double Skin Insulation
- AHU Mating Flanges
- Weatherproof Construction
- High Pressure Construction
- Static Pressure Taps
- Installed Pressure Gauges

Capacities (CFM) and Dimensions

Height	Designation	Width					
		1	2	3	4	5	6
	Housing	26 ¹ / ₈ "	49 ¹ / ₂ "	72 ⁷ / ₈ "	96 ¹ / ₄ "	119 ⁷ / ₈ "	143 ¹ / ₄ "
1	26 ⁷ / ₈ "	2,000	4,000	6,000	8,000	10,000	12,000
2	51"	4,000	8,000	12,000	16,000	20,000	24,000
3	75 ⁵ / ₈ "	6,000	12,000	18,000	24,000	30,000	36,000
4	99 ¹ / ₄ "	8,000	16,000	24,000	32,000	40,000	48,000

Note: Capacities are based on an airflow velocity of 500 FPM. For capacities based on velocities of 625 FPM increase capacities by a factor of 1.25. **Half size filter housings are available.**



DriPak® is a registered trademark of AAF-McQuay Inc. in Brazil, Venezuela, and the U.S. PerfectPleat® is a registered trademark of AAF-McQuay Inc. in Canada and the U.S.



AAF International Building
9920 Corporate Campus Dr., Suite 2200
Louisville, Kentucky 40223-5000

Customer Service 800.477.1214
Fax 800.254.3019

www.aafintl.com



AAF has a policy of continuous product research and improvement and reserves the right to change design and specifications without notice.

ISO Certified Firm

©2014 AAF International
The USGBC Member logo and LEED® are trademarks owned by the U.S. Green Building Council and are used by permission.