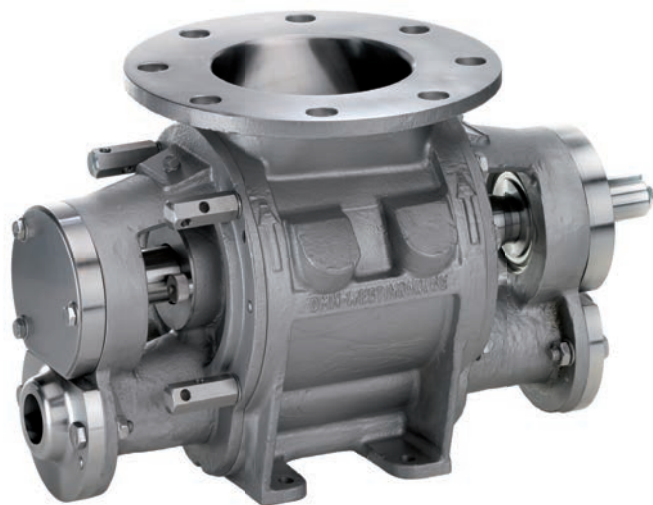


BL-BXL



BL-BXL rotary airlocks

The BL and BXL blow through rotary airlocks have been designed by DMN for many applications in the metering and pneumatic conveying of products in powder and granular form. Due to the modular design of this extensive and flexible range of valves many different configurations are available, using standard components.

The BXL valve with enlarged inlet is specifically designed for applications where inlet size is more important than capacity or for handling products with poor flowability. This valve is also available with an extra enlarged inlet: type BXXL.

The BL Dairy range includes USDA Dairy Accepted models and versions conforming to the EC 1934/2004 directive for sanitary use in the food and pharmaceutical industry. These stainless steel valves are easy detachable in a few minutes and meet the highest hygienic standards.

Both BL and BXL valves are optionally available in MZC execution with supporting bars for easy removal of the end cover and rotor without damaging the housing. The MZC valves are easy detachable in a few minutes.

The BL valves are available in 6 consecutive sizes from 150-350, rotor capacity ranging from 0.09-2.05 CFR at 100% filling. For the bigger sizes (400-500) the valves are supplied with square in- and outlet (type GOS). The BXL valves are available in 4 sizes from 200-350, capacity range of the rotor from 0.19-1.20 CFR at 100% filling. The BXL size corresponds with the dimension of the inlet flange. The BXXL valve sizes are available upon request.

Size Type BL	150	175	200	250	300	350
Size Type BXL		200	250	300	350	
Ft ³ /rev*	0.09	0.19	0.37	0.67	1.20	2.05

* at 100% filling

- High filling efficiency
- Sheared angle inlet
- Minimum air leakage
- Explosion proof models available up to 145 PSI
- Customized solutions
- Drilled flanges in accordance with PN10, ANSI 150lbs and JIS
- Flameproof versions available suitable for St2 products
- Versions conforming to ATEX 94/9/EC available
- Easy detachable versions available

Product information

The BL valves are supplied in 316 stainless steel, cast iron and aluminium. The BXL valves are available in 316 stainless steel and aluminium. Variations such as nickel and chrome plating and Tungsten coating are equally available on both models.

The standard rotor has 9 fixed blades. Various rotor configurations are optionally available, such as adjustable blades, reduced capacity, scalloped fixed vaned, end disc etc. Due to the state of the art manufacturing facility high accuracy and tight rotor clearances can easily be attained. The end covers have outboard bearing, lubricated and sealed for life. Eight different types of shaft sealing are available.

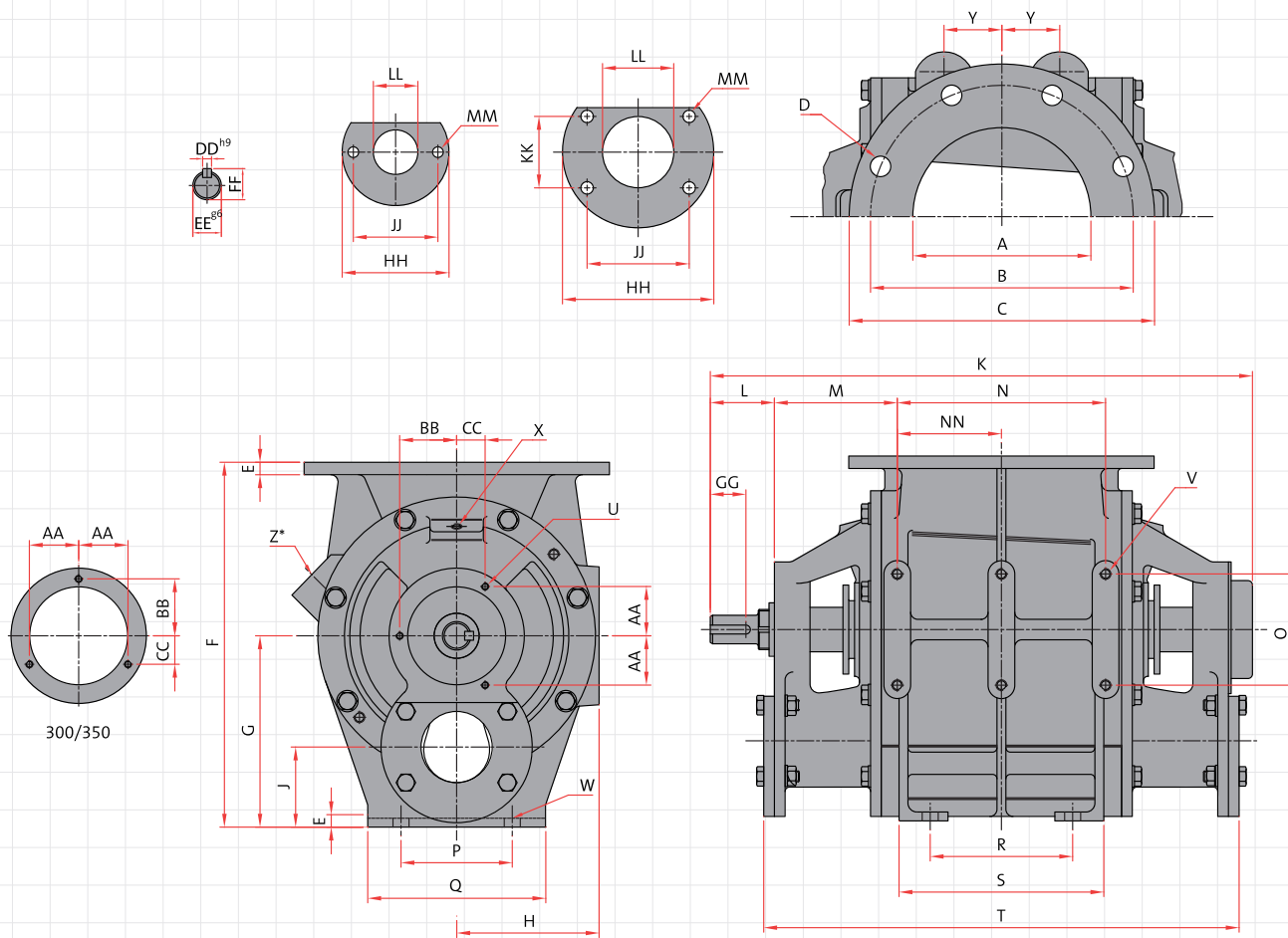
The standard models are suitable for products up to a temperature of 302 °F and a maximum pressure difference of 29 PSI. Certified configurations are available that are pressure shock resistant and flame proof for St2 products.

All models offer optimum venting through the large vent holes, standard pre-drilled and plugged on cast iron based options, optional on stainless steel and aluminium versions.

DMN fits SEW drives as their standard, other drives can be fitted on request. Whilst having a preference for direct drives, chain, air and hydraulic drives can also be supplied.

BL-BXL

Dimensions BL-BXL



Type		BL										BXL													
BL	BXL	Ft ² /rev	DIN			ANSI				DIN			ANSI				E	F	H	G	J	K	L	M	
ØA	ØB	D	ØC	ØB	D	E	F	H	ØA	ØB	D	ØC	ØB	D	E	F	H	G	J	K	L	M			
150		0.09	5.91	9.45	8xØ0.91	11.22	9.50	8xØ0.87	0.47	11.61	4.33							6.10	2.56	19.06	2.36	5.00			
175	200	0.19	6.89	10.63	8xØ0.91	12.40	-	-	0.55	13.39	5.12	7.87	11.61	8xØ0.91	13.50	11.75	8xØ0.87	0.55	13.39	6.50	6.89	2.95	20.63	2.36	4.92
200	250	0.37	7.87	11.61	8xØ0.91	13.50	11.75	8xØ0.87	0.55	16.14	6.30	9.84	13.78	12xØ0.91	15.98	14.25	12xØ1.00	0.63	16.34	7.78	8.46	3.54	23.98	2.83	5.43
250	300	0.67	9.84	13.78	12xØ0.91	15.98	14.25	12xØ1.00	0.63	18.50	7.48	11.81	15.75	12xØ0.91	19.02	17.00	12xØ1.00	0.83	19.49	8.76	9.65	3.94	25.94	2.83	5.43
300	350	1.20	11.81	15.75	12xØ0.91	19.02	17.00	12xØ1.00	0.83	22.24	8.86	13.78	18.11	16xØ0.91	20.87	18.75	12xØ1.13	0.83	23.43	8.86	11.61	4.72	30.04	2.91	5.91
350		2.05	13.78	18.11	16xØ0.91	20.87	18.75	12xØ1.13	1.02	26.18	10.63							13.19	5.20	32.80	2.91	6.10			

Type		N	NN	O	P	Q	R	S	T	U	V	X	Y	Z*	AA	BB	CC	DD	EE	FF	GG	HH	JJ	KK	LL	MM
150		5.75	-	3.94	4.33	5.51	3.94	6.06	16.54	3xM6	4xM10	¼" BSP (Ø10)	1.57	¼" BSP	1.46	2.07	1.46	0.31	1.18	1.30	1.38	4.72	3.74	-	1.97	2xØ0.47
175	200	7.48	-	3.94	5.12	6.30	5.12	7.48	18.11	3xM6	4xM10	¼" BSP (Ø10)	2.09	1" BSP	1.46	2.07	1.46	0.31	1.18	1.30	1.38	5.51	4.09	2.38	2.56	4xØ0.47
200	250	9.21	-	4.92	6.30	7.87	6.30	9.06	21.38	3xM8	4xM12	¼" BSP (Ø10)	2.56	1½" BSP	2.18	2.52	1.26	0.39	1.26	1.38	1.69	6.69	4.52	3.16	3.15	4xØ0.55
250	300	11.18	5.59	4.92	6.69	8.27	7.87	10.79	22.99	3xM8	6xM12	¼" BSP (Ø10)	2.95	1½" BSP	2.18	2.52	1.26	0.39	1.26	1.38	1.69	7.48	4.92	3.94	3.94	4xØ0.55
300	350	14.17	7.09	4.92	7.48	9.45	10.24	13.78	26.93	3xM10	6xM12	¼" BSP (Ø10)	3.74	1½" BSP	2.90	3.35	1.67	0.39	1.50	1.61	1.73	9.06	6.45	4.52	4.92	4xØ0.55
350		16.54	8.27	4.92	8.66	10.63	12.20	16.14	29.69	3xM10	6xM12	¼" BSP (Ø10)	4.41	1½" BSP	2.90	3.35	1.67	0.39	1.50	1.61	1.73	9.61	5.98	5.98	5.91	4xØ0.55

* Standard pre-drilled for cast iron | Standaard voorgeboord bij gietijzer | Standard geboort in Gußeisen | Standard percé pour fonte | Standard pre-taladrado para fundición de Fe | Standard preforato per ghisa | Standardowe otwory w żelivi | Предварительно изготовленные отверстия стандартны для чугуна