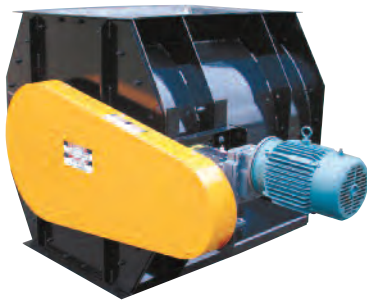
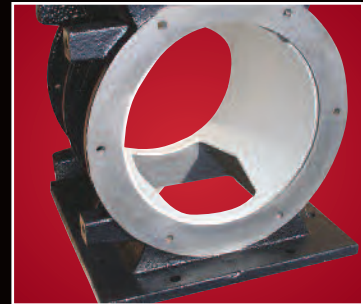
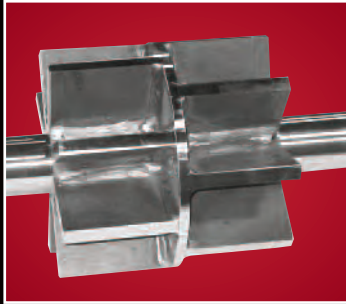




CV
S E R I E S

The Meyer Custom Valve Series airlocks are highly specialized. These units are designed to handle oversized large material, high pressures or extreme temperatures. These products all provide an engineered solution to your most demanding system requirements.



FV

The Meyer FV Fabricated rotary airlock valves are designed for use in low pressure dust collection, cyclone and pneumatic conveying applications. Their unique design allows oversized material to pass without binding issues experienced with other type of valves. These units provide the most economical solution in handling extremely large material rates.



HP

The HP High-Pressure rotary airlock valves are designed for high pressure conveying systems up to 50 PSI. These units feature oversized flanges and housings with reinforced rib design for maximum structural strength. The rotor design incorporates an oversized shaft and closed end rotor design to maintain a positive air seal. These valves are the perfect solution to convey non-abrasive products in medium dense phase conveying systems.



CD

Meyer CD Custom Design rotary airlock valves incorporate any of our standard product offerings but have significant modifications to specialize the valve to your specific application. The modifications can be as simple as special paint to requirements for highly engineered casting materials, drives, transitions or coatings. Meyer engineers can solve your most severe wear, corrosion, material or conveying valve application needs.



SIZE	CFR
24X24	5.9
30X30	11.8
36X36	21
48X48	49.5

Meyer FV Fabricated rotary airlock valves are especially suited to handle large volumes of light to medium density products including large irregular material typically found in dust collection and low pressure pneumatic systems. These valves are available in carbon steel, stainless steel or abrasion resistant steel as an economical solution. The precision cut and welded valves feature flange type bearings, ribbed housing and headplates, with replaceable neoprene, viton or urethane sealstrips.

UNMATCHED COMPETITIVE ADVANTAGES:

- Four standard sizes with custom sizes available to meet your system requirements
- Oversized flange assures valve stability
- Fabricated carbon steel, stainless steel or abrasion resistant steel construction to meet your specific application
- Flange type bearings for extended valve life
- Replaceable neoprene, viton or urethane sealstrips for maximum sealing
- Optional seal or packing available for special applications
- Reinforced rotor with inter blade gussets insuring vane rigidity

COMMON SERVICE CONDITIONS:

- Pressure Rating: 2 PSI
- Maximum Operating Temperature: 150°F
- Materials: Light to Medium Density Products: Chips, Flakes, Strips, Lumps

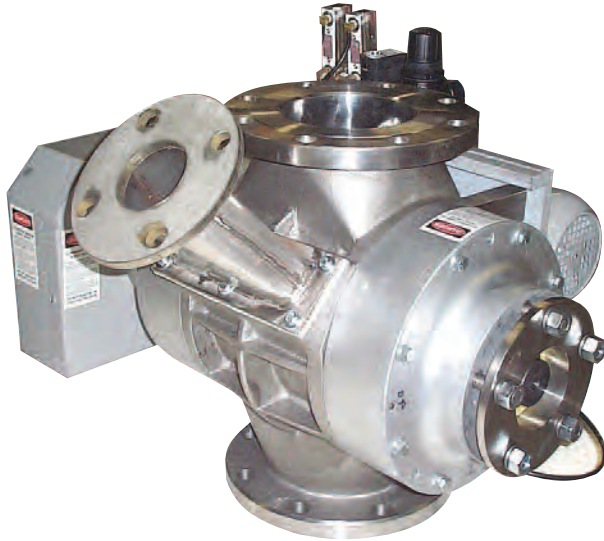
TYPICAL APPLICATIONS:

- Pneumatic Conveying
- Dust Collection
- Cyclone

RELEVANT INDUSTRIES:

- Wood
- Paper
- Insulation
- Textile
- Recycle
- Plastic
- Grain





SIZE	CFR
6"	0.18
8"	0.38
10"	0.75
14"	1.5
16"	3
20"	6

The HP High-Pressure rotary airlock valves are specifically designed for high-pressure plastic conveying systems where non-abrasive continuous material feed is required. The valves feature thicker ribbed housings and flanges specially suited for 50 PSI systems. Headplates feature a proprietary shaft bearing and rotor seal design minimizing air leakage. High pressure rotor design, including oversized shaft and blade materials, keep shaft deflection to a minimum.

UNMATCHED COMPETITIVE ADVANTAGES:

- Available in six sizes 6" through 20"
- Standard venting ensuring proper material flow
- Housing options include hard coat aluminum and stainless steel
- Stainless steel rotor is standard
- Proprietary shaft bearing and rotor seal design minimizes air leakage

COMMON SERVICE CONDITIONS:

- Pressure Rating: 50 PSI
- Maximum Operating Temperature: 200°F
- Materials: Non-Abrasive Powders and Granular

TYPICAL APPLICATIONS:

- Pneumatic Conveying

RELEVANT INDUSTRIES:

- Plastics
- Petrochemical
- Pharmaceutical
- Chemical

The CD Custom Design Series rotary airlock valves are a culmination of three generations of Meyer application expertise. These valves are designed to handle extreme operating conditions, unique customer needs or unusual installation requirements.

Meyer sales engineers work directly with the customer to tailor a custom solution to their problem.

UNIQUE FEATURES AVAILABLE:

High Temperature Design

Special Housings

Steam Jacketing

Special Paint

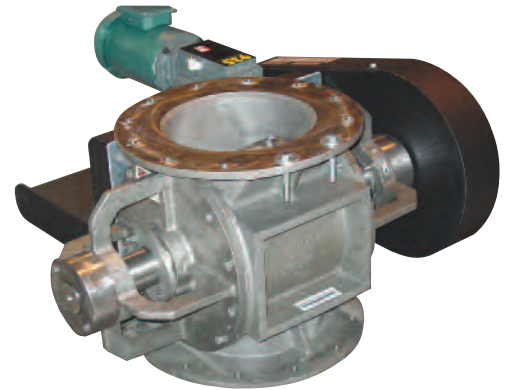
Special Coatings

Custom Transitions

Special Drives

Custom Guards

Special Rotors



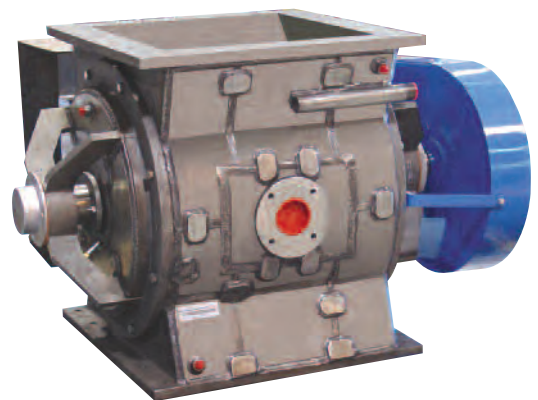
High Temperature

Bearing

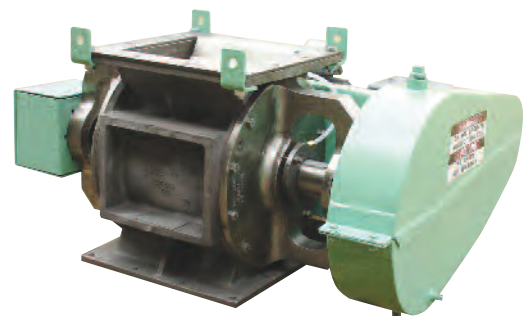
Packing

Heat Shields

Castings for 1500°F Operation



Steam jacketed airlocks for sensitive conveying and material applications.



Special oil tight guards, taconite seals and flange options to meet your custom applications.