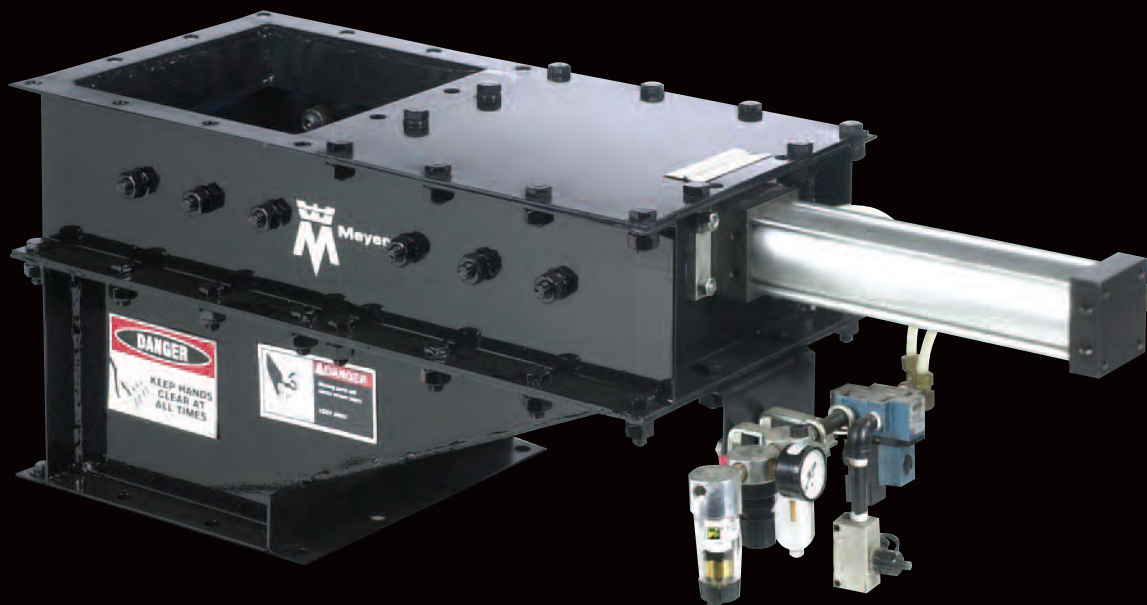




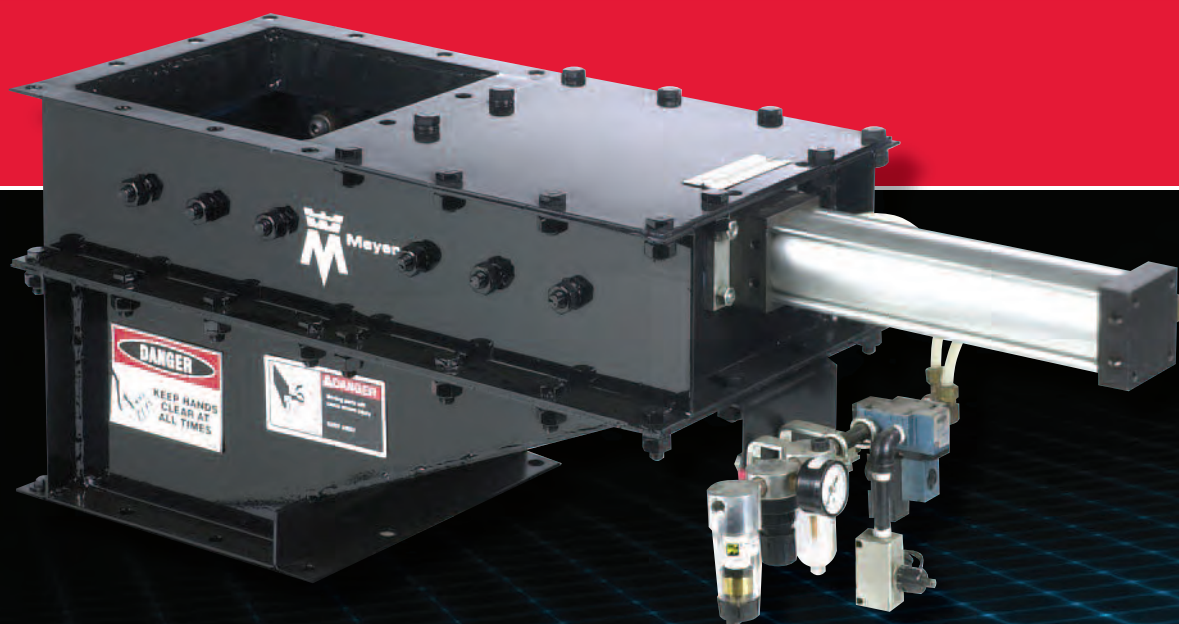
Meyer®
*Engineered Gate
Technologies*



**SLIDE GATES
PLUG VALVES
DIVERTER VALVES**

Meyer Slide Gates, Plug Valves & Diverter Valves

are the ideal solution for your powder and bulk solids applications



Typical Materials

Asphalt filter dust	Fluorspar
Barytes	Fly ash
Bauxite	Gypsum
Bentonite	Kaolin
Catalysts	Lime
Cement	Limestone
Clays (dried)	Magnesite
Coal	Magnetite
Coke dust	Manganese dioxide
Copper calcines	Ores
Dolomite	Phosphate rock
Feldspar	Silica
	Talc and many more

Meyer Slide Gates and Plug Valves are an ideal solution for positive shut-off of dry material bulk handling applications. All units are flanged for easy installation under dust collectors, hoppers, bins, silos and chutes. They allow the plant operator optimal control allowing simple material shut-off for valve maintenance and system operation.

Meyer Diverter Valves are an effective method for directing product flow to multiple destinations. They are the ideal solution for batch systems and multiple point operations.

All valves are available in electric, air and manual operation to meet the customer specific application.



Features:

- Heavy steel channel frame
- Oversize bearings
- Carbon steel construction
- Optional Stainless and AR steel construction
- High temperature designs

T BAR Maintenance Slide Gate

FEATURES:

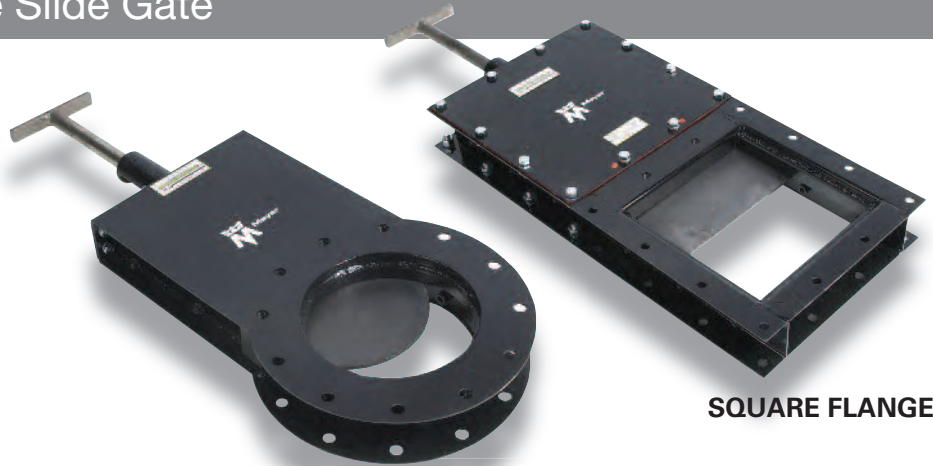
- Mild Steel, 304 SS, 316 SS, AR Steel Construction
- Low Profile
- Nickle Plated Shaft

INDUSTRIES WHERE USED:

- Food • Cement • Asphalt • Tobacco
- Chemical • Power • Plastic • Mining

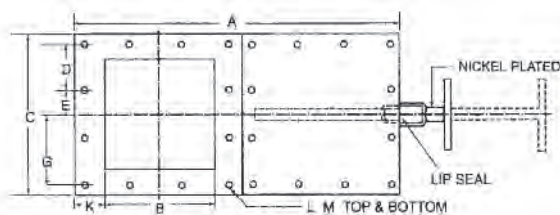
BENEFITS:

- Positive material shut-off
- Isolates in-line process equipment
- Dust tight inside to out
- Eases general maintenance

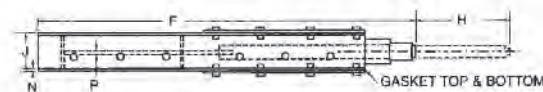


ROUND FLANGE

SQUARE FLANGE

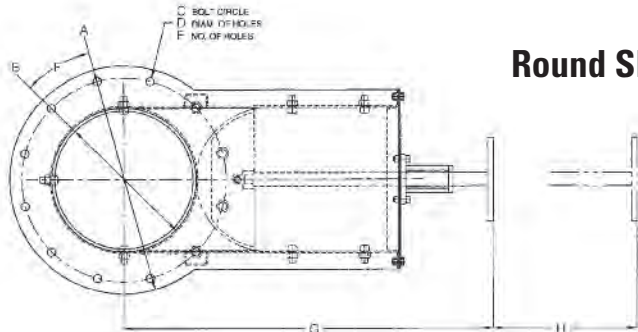


Square Slide Gate Dimensions in Inches



SIZE	A	B*	C	D	E	F	G	H	J	K	L	M	N	P	WT./LBS
6X6	17 1/2	6	8 1/2	—	17/8	24 13/16	35/8	57/8	3 1/2	1 1/4	8	7/16	10GA	1/4	31
8X8	22 1/2	8	11	—	2 1/2	27 11/16	47/8	77/8	3 1/2	1 1/2	8	7/16	10GA	1/4	41
10X10	27	10	13 1/4	4	2	31 7/8	6	9 7/8	3 1/2	1 5/8	12	9/16	10GA	1/4	60
12X12	33	12	16 1/4	4 7/8	2 7/16	36 7/8	7 5/16	11 7/8	3 1/2	2 1/8	12	9/16	10GA	1/4	80
14X14	38 1/2	14	19	4 1/4	4 1/4	41 3/8	8 1/2	13 7/8	4	2 1/2	16	9/16	7GA	3/8	126
16X16	44 1/2	17	22	5	5	48 11/16	10	16 3/4	4	2 1/2	16	9/16	7GA	3/8	175
18X18	46 1/2	18	23	5 1/4	5 1/4	50 3/4	10 1/2	17 3/4	4	2 1/2	16	11/16	7GA	3/8	200
20X20	50 1/2	20	25	5 3/4	5 3/4	54 3/4	11 1/2	19 3/4	4	2 1/2	16	11/16	7GA	3/8	230
22X22	54 1/2	22	27	5	2 1/2	58 3/4	12 1/2	21 3/4	4	2 1/2	20	11/16	7GA	3/8	260

Note *openings are square. (L) indicates number of holes. No holes in corners on 6x6 or 8x8 - only 2 on each side straddling center line. (M) diameter of holes. Maximum operating temperature 450° F



Round Slide Gate Dimensions in Inches



SIZE	A	B	C	D	E	F	G	H	J	K	L
6X6	CF	CF	CF	CF	CF	CF	CF	CF	CF	CF	CF
8X8	13 1/2	8	11 3/4	9/16	8	22 1/2°	27 13/16	77/8	3 1/2	10GA	1/4
10X10	16	10	14 1/4	11/16	12	15°	36 3/4	10	3 1/2	10GA	1/4
12X12	19	12	17	11/16	12	15°	40 1/4	12	3 1/2	10GA	1/4

DUST TIGHT Slide Gate

FEATURES:

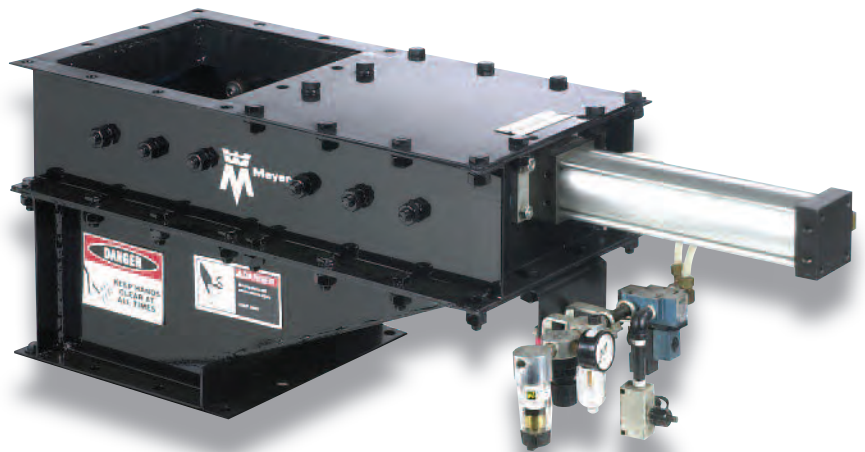
- Heavy gauge mild steel construction
- Stainless steel slide strips for smooth operation
- Air cylinder & accessories
- NEMA 4 solenoid valve (Expl. Prf. optional)
- Air filter, regulator and lubricator
- Flow control valve
- Pressure gauge
- Self cleaning, cylindrical slide plate guides mounted beyond material flow path
- Complete piping, and wiring, pre-tested for installation-ready operation

INDUSTRIES WHERE USED:

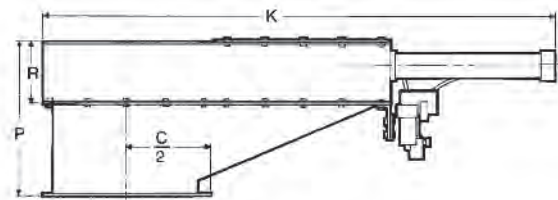
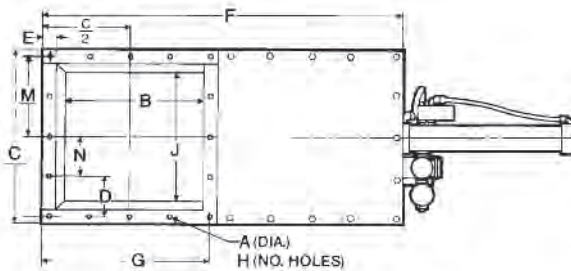
- Food • Cement • Asphalt • Tobacco
- Chemical • Power • Plastic • Mining

BENEFITS:

- Positive material shut off
- Isolates in-line process equipment
- Dust tight inside to out
- Eases general maintenance



Slide Gate Dimensions in Inches



SIZE	A	B	C	D	E	F	G	H	J	K	M	N	P	R	CYL. BORE
6x6	7/16	43/4	8	—	11/8	173/4	75/8	8	33/4	263/4	35/8	17/8	10	6	11/2
8x8	7/16	71/4	11	—	13/8	221/2	103/8	8	61/4	331/4	47/8	21/2	12	6	2
10x10	9/16	9	131/4	4	15/8	267/8	125/8	12	8	391/4	6	2	14	6	21/2
12x12	9/16	115/8	161/4	47/8	113/16	343/8	157/16	12	105/8	509/16	75/16	27/16	16	6	31/4
14x14	9/16	14	19	41/4	2	387/8	18	16	13	561/8	81/2	41/4	18	8	21/2
14x14	9/16	14	19	41/4	2	387/8	18	16	13	567/8	81/2	41/4	18	8	4
16x16	9/16	17	22	5	2	447/8	21	16	16	657/8	10	5	20	8	31/4
16x16	9/16	17	22	5	2	447/8	21	16	16	661/8	10	5	20	8	5
18x18	11/16	18	24	51/4	21/2	487/8	221/2	16	17	703/8	101/2	51/4	22	8	31/4
18x18	11/16	18	24	51/4	21/2	487/8	221/2	16	17	705/8	101/2	51/4	22	8	5
20x20	11/16	191/2	26	53/4	23/4	537/8	241/2	16	181/2	777/16	111/2	53/4	24	9	5
20x20	11/16	191/2	26	53/4	23/4	537/8	241/2	16	181/2	777/16	111/2	53/4	24	9	6
22x22	11/16	211/2	28	5	23/4	571/8	261/2	20	201/2	823/16	121/2	21/2	26	9	5
22x22	11/16	211/2	28	5	23/4	571/8	261/2	20	201/2	823/16	121/2	21/2	26	9	6
22x22	11/16	211/2	28	5	23/4	571/8	261/2	20	201/2	825/16	121/2	21/2	27	10	8
24x24	11/16	23	291/4	51/4	25/8	597/8	273/4	20	22	869/16	131/8	25/8	28	9	5
24x24	11/16	23	291/4	51/4	25/8	597/8	273/4	20	22	869/16	131/8	25/8	28	9	6
24x24	11/16	23	291/4	51/4	25/8	597/8	273/4	20	22	8611/16	131/8	25/8	29	10	8

FULL FLOW Gravity Diverter Valve

FEATURES:

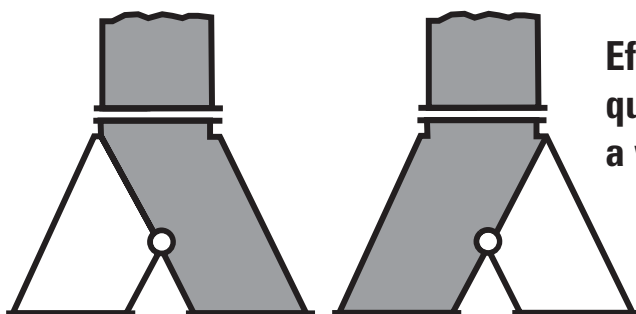
- Heavy gauge mild steel construction
- Optional stainless and abrasion resistant steel
- Air actuated or manual operator
- Optional air operator controls
- Dust tight inside to outside

INDUSTRIES WHERE USED:

- Food • Cement • Asphalt • Tobacco
- Chemical • Power • Plastic • Mining

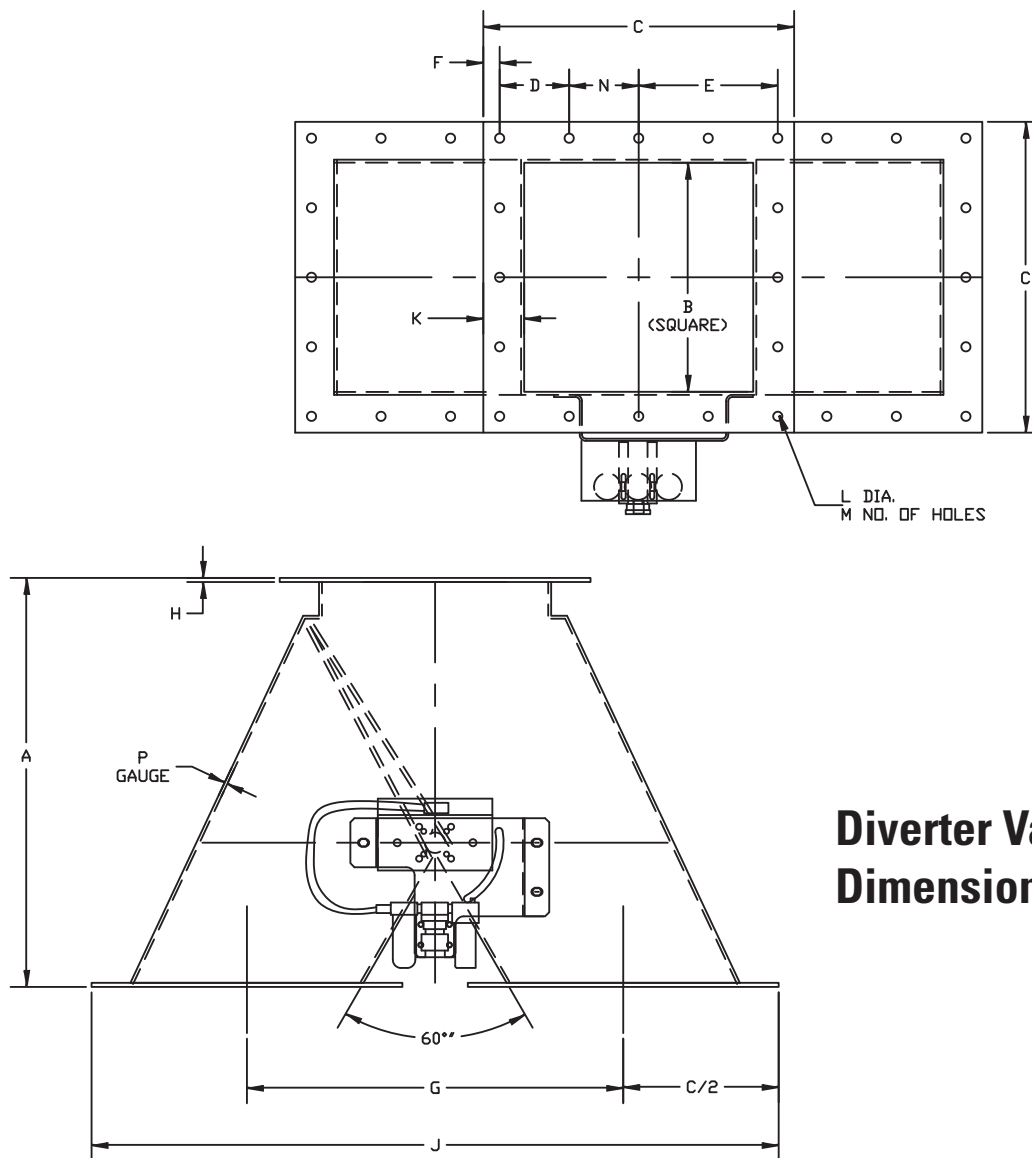
BENEFITS:

Unit is ideal for diverting flow when a critical seal between legs or cutting through material is not required



Efficient design provides quick flow change for a wide range of applications

FULL FLOW Gravity Diverter Valve



**Diverter Valve
Dimensions in Inches**

SIZE	A	B	C	D	E	F	G	H	J	K	L	M	N	P	CYL. BORE	WEIGHT*
4	13	3 3/4	5 1/2	—	2 3/8	3/8	9	7GA	14 1/2	7/8	5/16	8	1 1/4	10	1 1/2	35
6	15	6	8 1/4	—	3 5/8	1/2	12	7GA	20 1/4	1 1/8	7/16	8	1 7/8	10	1 1/2	60
8	17 1/2	8	11	—	4 7/8	5/8	15	1/4	26	1 1/2	7/16	8	2 1/2	10	2	85
10	20	10	13 1/2	4	6	3/4	17	1/4	30 1/2	1 3/4	9/16	12	2	10	2	120
12	21 1/2	12	16 1/4	4 7/8	7 5/16	13/16	20	1/4	36 1/4	2 1/8	9/16	12	2 7/16	10	2	150
14	25	14	19	4 1/4	8 1/2	1	23	3/8	42	2 1/2	9/16	16	4 1/4	7	2 1/2	240
16	28	16	22	5	10	1	26	3/8	48	3	9/16	16	5	7	2 1/2	300
18	30	18	24	5 1/4	10 1/2	1 1/2	28	3/8	52	3	11/16	16	5 1/4	7	2 1/2	350
20	32	20	26	5 3/4	11 1/2	1 1/2	30	3/8	56	3	11/16	16	5 3/4	7	3 1/4	410
22	35	22	28	5	12 1/2	1 1/2	32	3/8	60	3	11/16	20	2 1/2	7	3 1/4	470
24	37	24	30	5 1/4	13 1/8	1 7/8	34	3/8	64	3	11/16	20	2 5/8	7	3 1/4	530

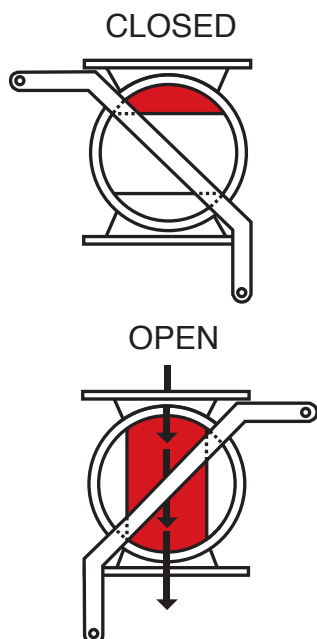
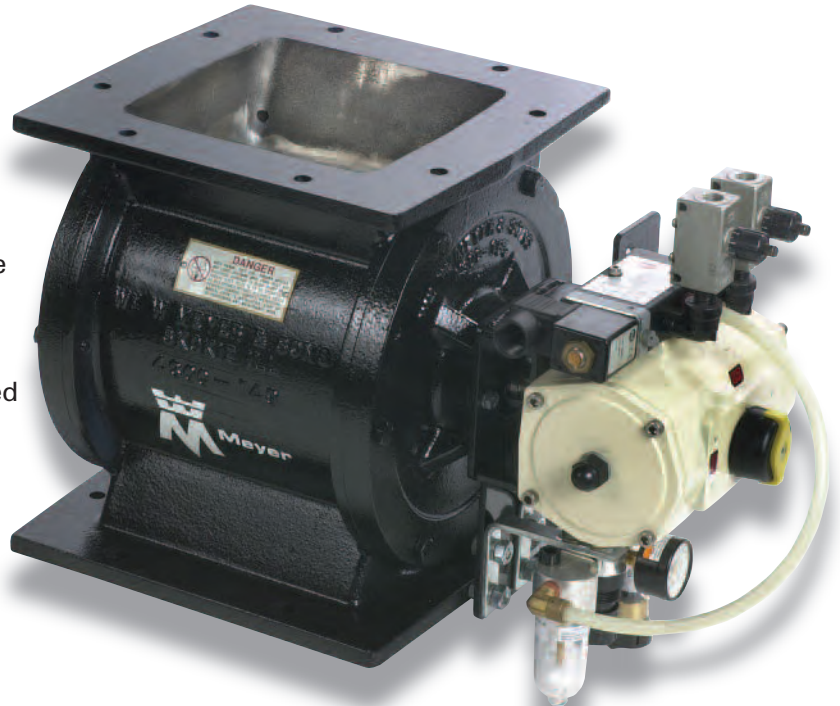
*Weights are approximate

For reliable gravity loadout of free flowing material, automatically or manually

The Meyer Rotary Plug Valve is an effective method of unloading dry free flowing bulk materials from silos or storage hoppers. It holds a special advantage over conventional gates where closing against a column of heavy material such as portland cement may pose a problem. The double-clam rotor slices through materials that can pack or agglomerate during storage, such as: gypsum, flyash, kaolin clay, salt, silica, buaxite, grain products and the like. Structural integrity, dependable dust free operation, and the ability to handle elevated temperatures; all make the Plug Valve ideal for severe service applications.

FEATURES:

- Seven standard sizes are available (4x4 through 16x16)
- Round or square flange configuration
- Available with manual hand lever, chain wheel or an automatic air actuator with position switchers
- Optional outboard bearing design with special shaft seals for extreme operating temperatures



When the valve is closed, the double clam rotor seals against the product flow above and the system processes below

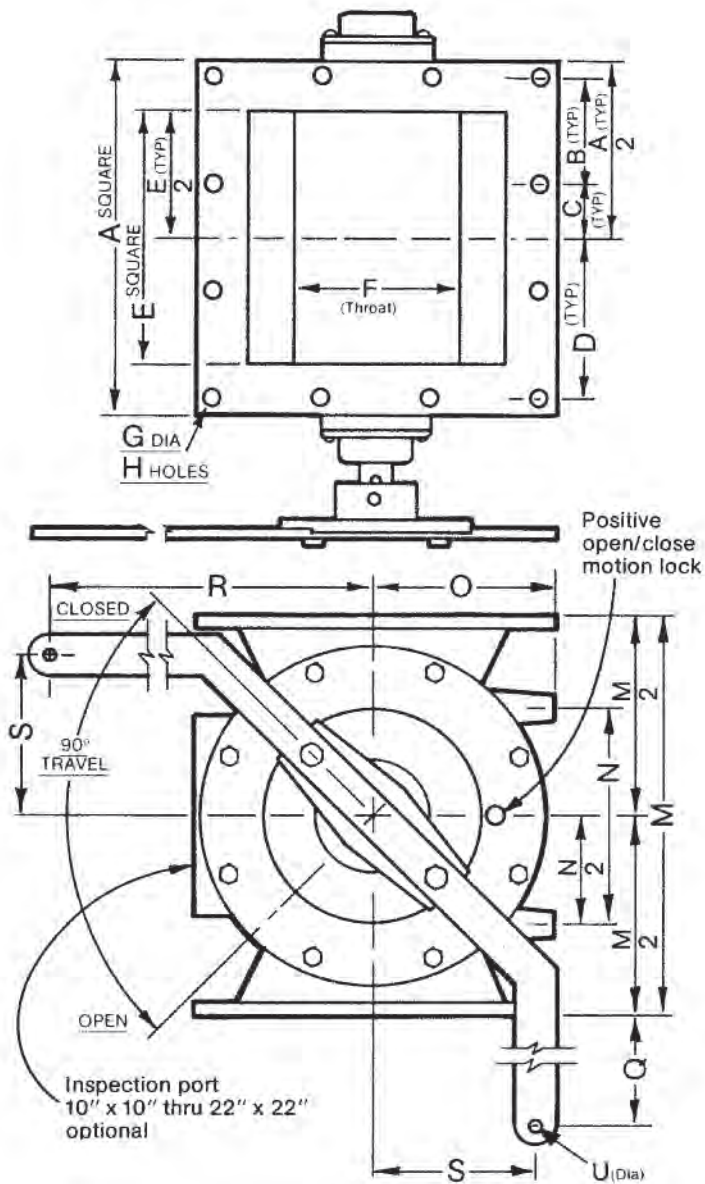
In the open position, a straight thru, unrestricted opening allows for a high rate of flow

Ideal as an isolation gate-valve or for unloading to belt/screw conveyors, air slides, transport trucks or open stockpiles

BIN TO LOAD TRUCKS

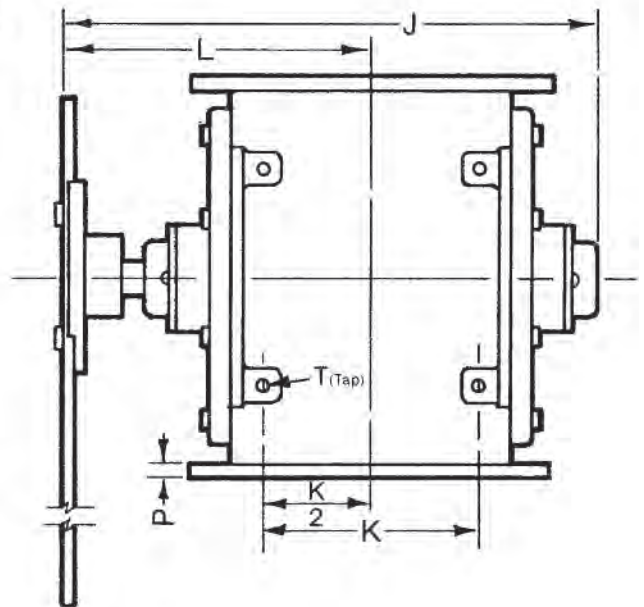


Typical Application



Square manual design shown.
Consult factory for round flange
dimensions and valve with
air actuator

Rotary Plug Valve Dimensions in inches



SIZE	A	B	C	D	E	F	G	H	J	K	L	M	N	O	P	Q	R	S	T	U
4X4	5 1/2	-	1 1/4	2 3/8	3 1/2	2 3/8	5/16	8	10 7/8	2 5/16	6 13/16	7 3/4	4 13/16	3 3/8	1/4	6 7/8	10 3/4	3 1/2	5/16-18	1/2
6X6	8	-	1 7/8	3 5/8	5 1/2	3 11/16	7/16	8	14 1/2	4 5/16	8 5/8	10	5 5/8	4 3/4	3/8	5 3/4	10 3/4	3 1/2	3/8-16	1/2
8X8	11	-	2 1/2	4 7/8	7 1/2	4 3/4	7/16	8	16 1/2	6	9 5/8	12	7 1/4	5 1/2	1/2	7 1/4	13 1/4	6	3/8-16	1/2
10X10	13 1/4	4	2	6	9 1/2	6 1/8	9/16	12	19 1/2	8	11 1/8	15	8 1/8	6 5/8	1/2	5 3/4	13 1/4	6	1/2-13	1/2
12X12	16 1/4	4 7/8	2 7/16	7 5/16	11 1/4	7 1/4	9/16	12	23 1/4	9 3/4	13 1/2	18 1/4	10 1/2	8 1/8	5/8	4 1/8	13 1/4	6	1/2-13	1/2
14X14	19	4 1/4	4 1/4	8 1/2	14	8 1/2	9/16	16	29	12	16 5/8	21	9 1/4	9 1/4	5/8	8 3/4	19 1/4	12	1/2-13	1/2
16X16	22	5	5	10	16	9 1/2	9/16	16	31	14	17 5/8	24	10 1/4	10 1/4	5/8	7 1/4	19 1/4	12	1/2-13	1/2

System Components

In addition to Slide Gates, Plug and Diverter Valves, Meyer designs, engineers and manufactures a wide variety of other products designed specifically for bulk processing applications. Like our Slide Gates, Plug and Diverter Valves, these products are designed and built to withstand the rigors of demanding applications. The next time you are in the market to repair, replace or upgrade your process system components, give us a call. We manufacture all the key components for pneumatic conveying, process metering and dust control.



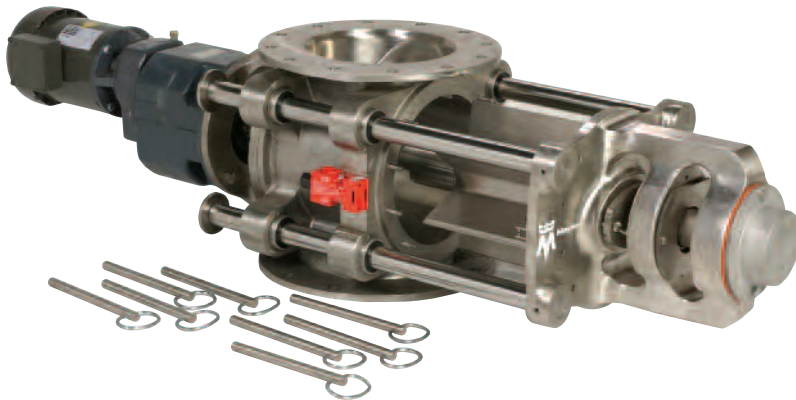
Dust Duty Valves



Universal Duty Valves



MPFTA Double Flapgate Valves



Klean-In-Place Rotary Airlock Valves



Pneumatic Screw Pumps



Blower Packages

Service and Parts



Since 1946, Wm W. Meyer & Sons has been delivering quick, conscientious service and superior craftsmanship on replacement parts to customers throughout the country. We understand the costs of downtime, and make it our highest priority to help you keep your plant running trouble free. Our on-site preventative maintenance programs, responsive repair services and quick-ship replacement parts capabilities help us deliver the extra value customers need in today's competitive marketplace.

In addition to maintaining and repairing our own Rotary Airlock Valves, we also provide expert repair services on other manufacturers' products.

WE OFFER REPAIR SERVICES ON THESE AND OTHER SYSTEM COMPONENTS:

Rotary Airlocks

Double-Flapgates

Diversers

Slide Gates

Shredders

Compressors

Pumps

Blowers

Many times, repairs can be done right on the spot to minimize production disruption and speed startup. However, when it is impractical to repair a unit on site, it will be shipped to our repair facility for immediate attention. It will be torn down, carefully inspected and restored to like-new condition, including a return to the original tolerances.

COMPREHENSIVE EVALUATION ON EVERY UNIT:

Complete disassembly

Inspection of each component

Comparison to original manufacturers' specs and tolerances

Repair or replacement of worn or damaged component parts

Genuine OEM Parts

Re-assembly

Final Testing

Service Warranty

If your equipment is beyond repair or it is not economical to repair it, Meyer will give you the option of choosing between a new or re-manufactured piece of equipment from available stock.

t r a d i t i o n
e x p e r t i s e
r e s p o n s i v e n e s s
l e a d e r s h i p



Wm. W. Meyer & Sons, Inc.
1700 Franklin Blvd.
Libertyville, IL 60048

847-918-0111
800-963-4458

www.rotaryvalve.com