

CAM-ROLLER GATE VALVES

Bulletin 1100.001

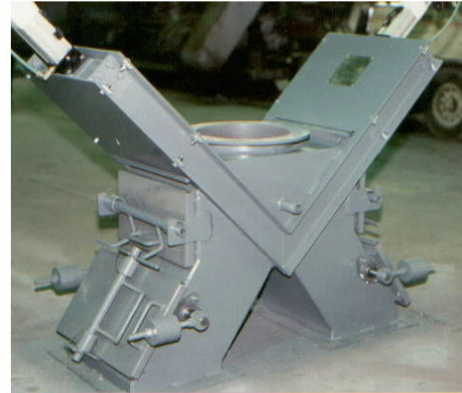
*The SINCLAIR CAM-ROLLER Gate Valve is specifically designed to serve industrial process industries with the same high quality engineering standards that describe our complete line of bulk material handling products. **Our experience** in keeping bulk materials moving is **your assurance** of solids flow control .*

The **SINCLAIR Horizontal "Cam-Roller" Gate Valve** is ideal for flow control of almost all dry, bulk materials. Since the gate operates on a **live bed of rollers**, most causes of jamming and gate clogging are removed. All construction is heavy-duty for low-maintenance, high quality industrial service.

Gate designs can include special mounting for round chutes, gear-assisted manual operators, bolted top cover plates, square-to-square or square-to-round bottom discharge chutes for dust tight operation and side-mount cylinder arrangements for applications where space is premium.



Large horizontal gate valves for granulated sugar service. Throat opening is ~ 36" square. All contact surfaces are T-304L-SS construction, with heavy-duty double-acting air cylinder actuation.

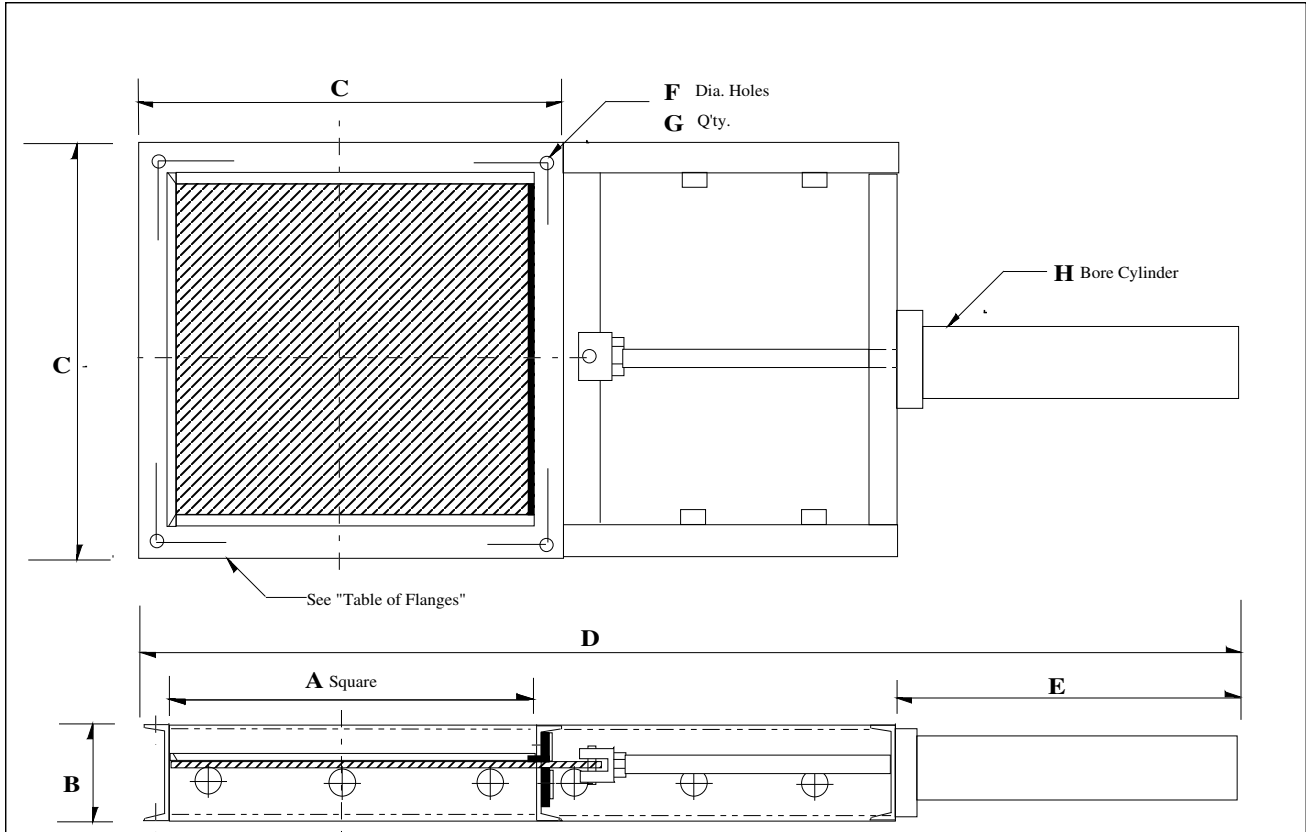


Twin cam-roller valves with pneumatic actuators, arranged in special housing to serve as V-gate diverter valve module for steel mill service. Note BWSI "CamLock" quick access inspection doors both sides

Standard design features include:

- **No tracks or slides** to jam gate. Gate **ROLLS**.
- Available in sizes from **6" to 6 ft.!**
- Configurations available to match square, rectangular, round or oblique chutes.
- Gate blades are **250 Bhn abrasion-resistant** steel.
- Valves are **completely assembled** in our factory, with pre-mounting and pre-piping of all automatic actuation and positioning devices.
- Valves available in **carbon steel, abrasion-resistant, high-temperature and stainless steel construction**.
- **Optional actuators** include:
 - Lever arm
 - Rack & pinion gear operator with hand wheel
 - R & P operator with chain wheel
 - Pneumatic cylinder
 - Hydraulic cylinder
 - Linear actuator
 - Electric motor with gear reducer

PNEUMATIC CAM- ROLLER GATE VALVE

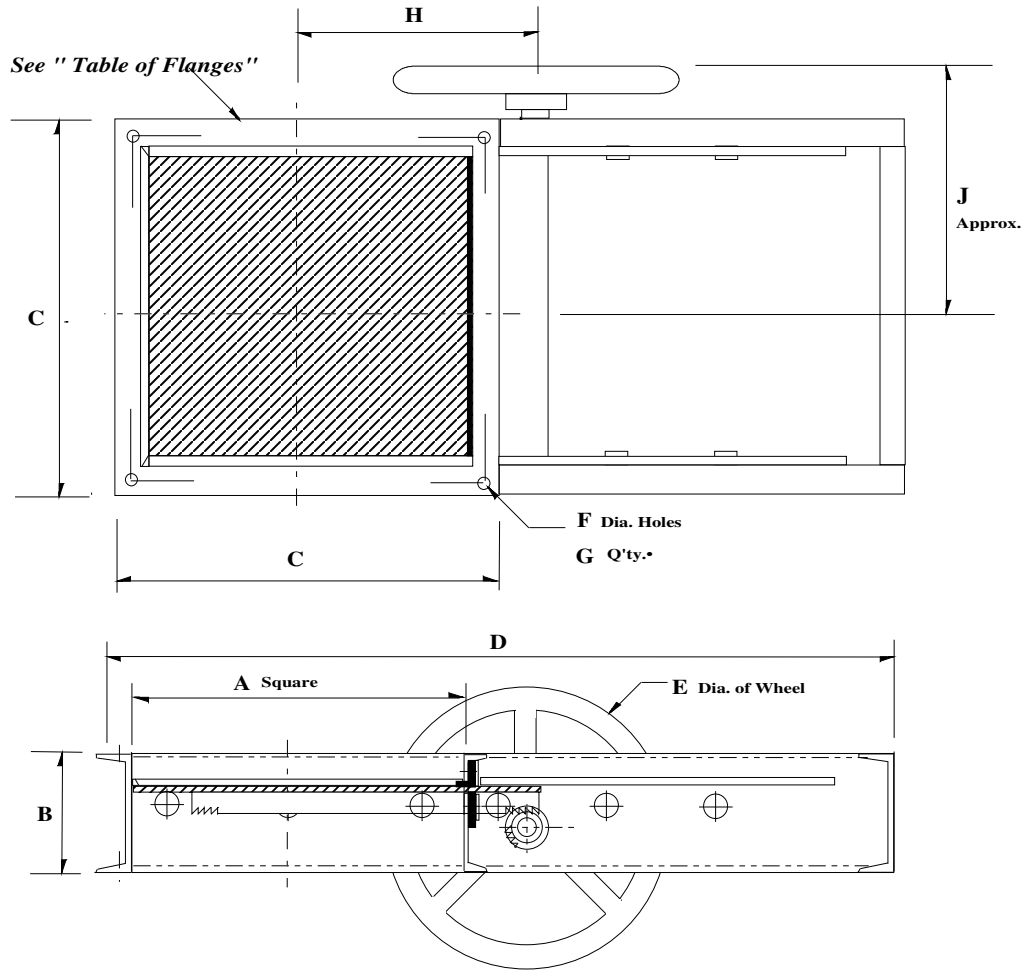


| Model | A | B | C | D | E | F | G | H |
|-------|----|---|-------|----|-------|-----|----|------|
| 1106P | 6 | 6 | 9.75 | 33 | 11.88 | .44 | 8 | 2 |
| 1108P | 8 | 6 | 11.75 | 39 | 13.88 | .44 | 8 | 2 |
| 1110P | 10 | 6 | 13.75 | 46 | 16.38 | .44 | 12 | 2.5 |
| 1112P | 12 | 6 | 15.75 | 55 | 19.88 | .44 | 12 | 3.25 |
| 1114P | 14 | 6 | 17.75 | 61 | 21.88 | .56 | 16 | 3.25 |
| 1116P | 16 | 6 | 19.75 | 67 | 22.63 | .56 | 16 | 4 |
| 1118P | 18 | 6 | 21.75 | 74 | 25.63 | .56 | 16 | 4 |
| 1120P | 20 | 6 | 23.75 | 80 | 27.63 | .56 | 16 | 4 |
| 1124P | 24 | 6 | 27.75 | 94 | 31.88 | .56 | 16 | 5 |

All Dimensions in Inches

Dimensions Not Certified

RACK & PINION CAM-ROLLER GATE VALVE



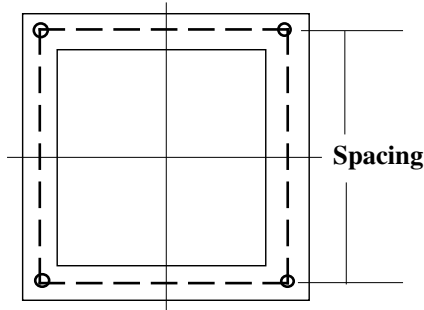
| Model | A | B | C | D | E | F | G | H | J |
|-------|----|---|-------|----|----|-----|----|----|----|
| 1106M | 6 | 6 | 9.75 | 23 | 12 | .44 | 8 | 7 | 8 |
| 1108M | 8 | 6 | 11.75 | 27 | 12 | .44 | 8 | 8 | 9 |
| 1110M | 10 | 6 | 13.75 | 31 | 12 | .44 | 12 | 9 | 10 |
| 1112M | 12 | 6 | 15.75 | 35 | 12 | .44 | 12 | 10 | 11 |
| 1114M | 14 | 6 | 17.75 | 39 | 12 | .56 | 16 | 11 | 12 |
| 1116M | 16 | 6 | 19.75 | 43 | 12 | .56 | 16 | 12 | 13 |
| 1118M | 18 | 6 | 21.75 | 47 | 18 | .56 | 16 | 13 | 14 |
| 1120M | 20 | 6 | 23.75 | 51 | 18 | .56 | 16 | 14 | 15 |
| 1124M | 24 | 6 | 27.75 | 59 | 18 | .56 | 16 | 16 | 17 |

All Dimensions in Inches

Dimensions Not Certified

CAM-ROLLER GATE VALVES

TABLE OF FLANGES

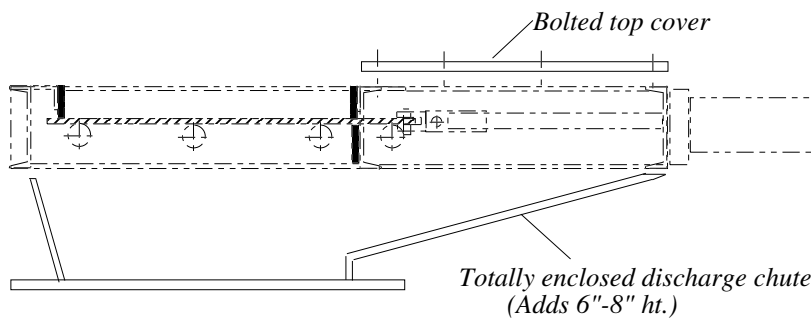


| MODEL | HOLE DIA. | Q'TY. | SPACING |
|-------|-----------|-------|----------------|
| 1106 | 7/16 | 8 | 2 sp. @ 4-1/8 |
| 1108 | 7/16 | 8 | 2 sp. @ 5-1/8 |
| 1110 | 7/16 | 12 | 3 sp. @ 4-1/16 |
| 1112 | 7/16 | 12 | 3 sp. @ 4-3/4 |
| 1114 | 9/16 | 16 | 4 sp. @ 4-1/16 |
| 1116 | 9/16 | 16 | 4 sp. @ 4-9/16 |
| 1118 | 9/16 | 16 | 4 sp. @ 5-1/16 |
| 1120 | 9/16 | 16 | 4 sp. @ 5-9/16 |
| 1124 | 9/16 | 16 | 4 sp. @ 6-9/16 |

Flanges identical, manual or pneumatic operation

All Dimensions in Inches

OPTIONS AND ACCESSORIES



Consult **SINCLAIR** for any option required by your process ... the options illustrated here are *not* meant to be a complete listing.

Custom designs are our specialty!

